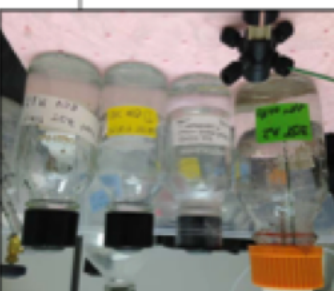


harmless **Ethene**,
completely converted into
products until it is finally
different toxic daughter
transform TCE into
microorganisms (V22)
anaerobic
Through **bioremediation**,

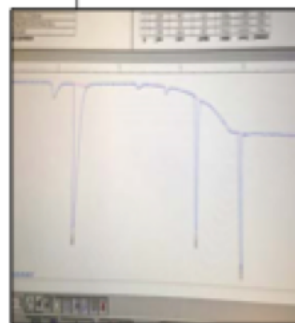
groundwater sources,
underground aquifers and
TCE still pollutes many
was banned, however
carcinogen and its use
revealed that TCE is a
Research in the 80s
properly dispose of it.
regulation measures to
metal. There were no
to remove grease from
government as a solvent
businesses and the
and 70s by dry-cleaning
widely used in the 60s



minutes for each bottle.
test was performed every 2
converting to ethene and a rate
monitor the process of TCE
2. The GC system was used to



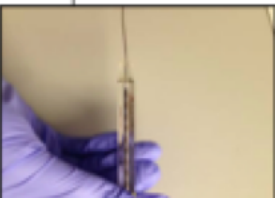
for several minutes.
added to each bottle and shaken
0.1 mL of sodium formate were
4. 0.2 mL of saturated TCE and



anaerobic.
minutes to keep them sterile and
CO2 under the fume hood for 12
3. Bottles purged with nitrogen &

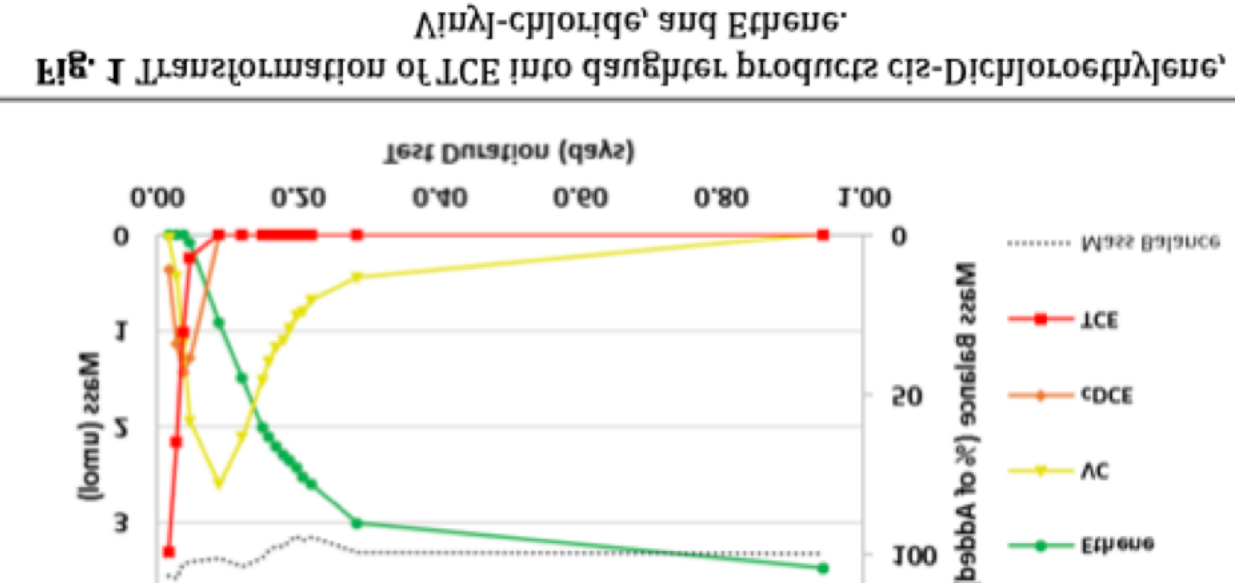
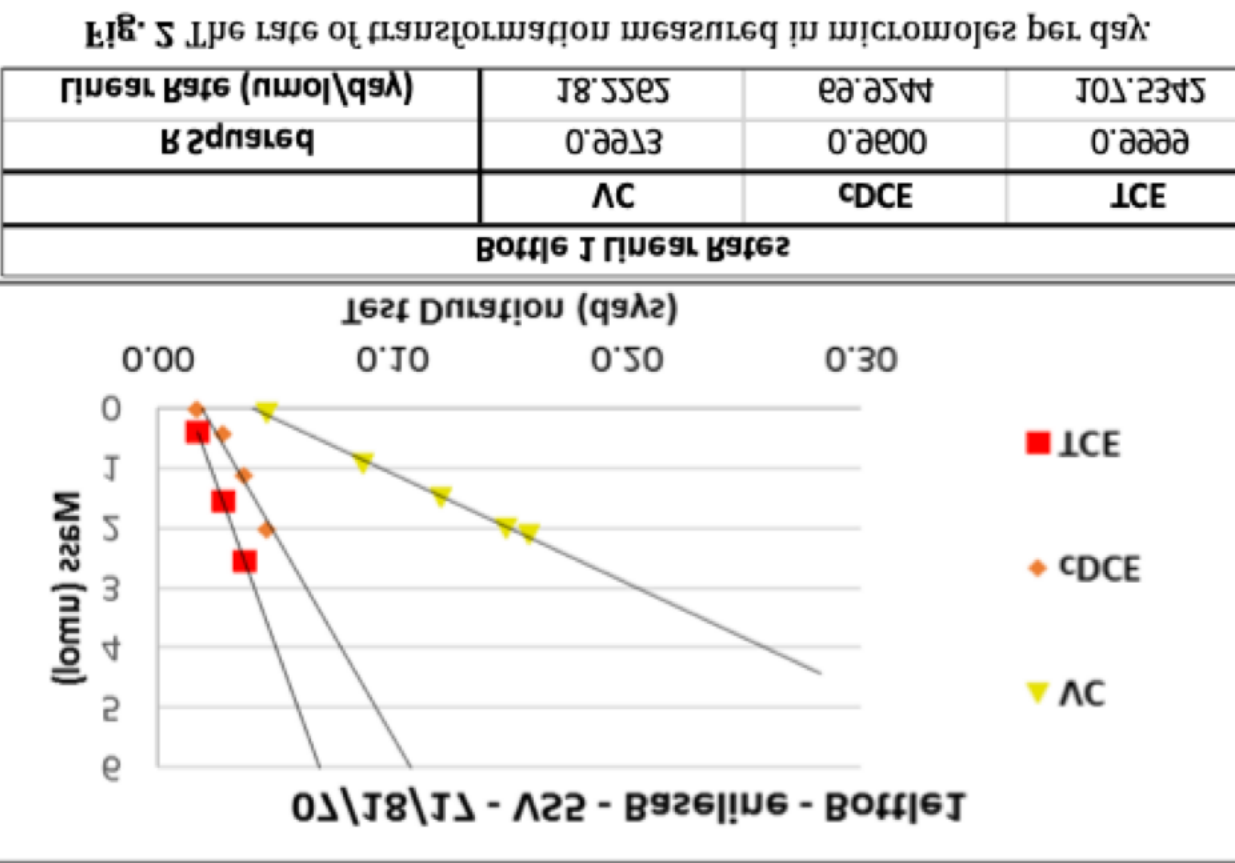


bottles from the gas chamber
from chemostats to anaerobic
2. 20 mL of V22 culture transferred



corresponding peak areas.
concentrations and finding the
aprotic batch reactors of known TCE

Advancement of Science, 34 Aug. 2001, Web. 30 July 2012.
Golley, Derek R. "Anaerobes to the Rescue," Science, American Association for the
Library of Medicine, 2008, Web. 30 July 2012.
A Journal of the International Association on Water Pollution Research, U.S. National
Contaminated Groundwater Using Anaerobic Process," Water Science and Technology:
Chomazian, C. J. Kalomiridis, and K. Gnanagunang, "Bioremediation of Trichloroethylene
Apr. 2012, Web. 30 July 2012.
EPA, "Fact Sheet on Trichloroethylene (TCE)," EPA, Environmental Protection Agency, 18
REFERENCES:



their generosity in funding the lab.
Nation Science Foundation for
for their guidance, and to the
Basimussen, and Gillian Williams
lab, to Emma Ehret, Mitchell
Zemprini for welcoming us into his
and the ZEEY program, to Dr.
Huge thanks to Dr. Skip Kochert

Acknowledgements

water sources,
from contaminated
to remove toxins
and eco-friendly way
could be a feasible
➤ Anaerobic bacteria

hours.
in approximately 24
the TCE into Ethene
CONVERTED 100% OF